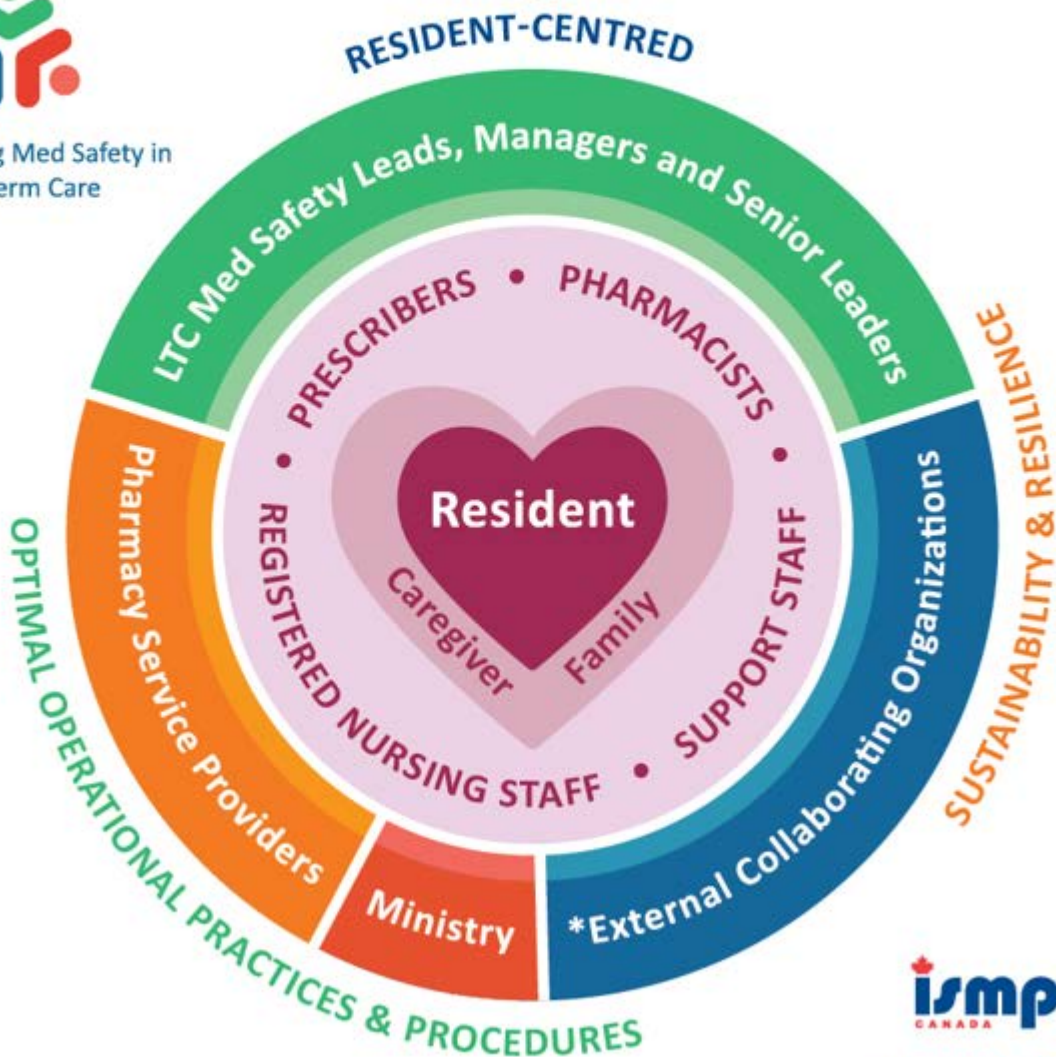


Ontario Safe Medication Management in Long-Term Care Framework



Strengthening Med Safety in
Long-Term Care





Ontario Safe Medication Management in Long-Term Care Framework



	Resident-Centred	Optimal Operational Practices & Procedures	Sustainability & Resilience
Resident	<ul style="list-style-type: none"> Participates as a meaningful partner in the care team 	<ul style="list-style-type: none"> Be supported to share questions or concerns about medications 	<ul style="list-style-type: none"> Participate in regular med review discussions & be engaged in decisions about changes to medications Share any concerns in a supportive environment
Family/Caregiver	<ul style="list-style-type: none"> Participates when invited/appointed to act on a resident's behalf 	<ul style="list-style-type: none"> Decisions are guided by the resident's previously expressed wishes 	
Registered Nursing Staff	<ul style="list-style-type: none"> Understand & support each individualized Resident Plan of Care 	<ul style="list-style-type: none"> Collaborate with care team members in a supportive environment to: <ul style="list-style-type: none"> - ensure timely communication of medication information or concerns - safely transcribe, prepare, administer and monitor medications 	<ul style="list-style-type: none"> Recognize when medications have led to unintended clinical changes in residents & intervene Engage in medication safety reporting & learning
Prescribers	<ul style="list-style-type: none"> Prescribe medications safely and appropriately to support each individualized Resident Plan of Care 	<ul style="list-style-type: none"> Collaborate with care team members to: <ul style="list-style-type: none"> - ensure timely communication of medication information or concerns 	<ul style="list-style-type: none"> Recognize when medications have led to unintended clinical changes in residents & intervene Engage in medication safety reporting & learning
Support Staff: PSW, Recreation Therapist, allied health, dietary	<ul style="list-style-type: none"> Deliver timely and safe individualized plan of care for resident, and report changes or concerns to Registered Staff 	<ul style="list-style-type: none"> Collaborate with Registered Staff to support unique resident needs Where specific criteria have been met, PSWs may administer medications according to the Regulation 	<ul style="list-style-type: none"> Speak up about resident safety concerns in a supportive environment
Pharmacy Service Providers/ Pharmacist	<ul style="list-style-type: none"> Integrate Resident's pertinent medical and medication history in support of individualized Resident Plan of Care 	<ul style="list-style-type: none"> Collaborate with care team members to: <ul style="list-style-type: none"> - participate in Quality Improvement (QI) committee, support reliable medication management processes, including regular med reviews - ensure timely communication of medication information or concerns 	<ul style="list-style-type: none"> Address questions/concerns from residents/families or care team Recognize when medications have led to unintended clinical changes in residents & intervene
LTC Med Safety Leads, Managers & Senior Leaders	<ul style="list-style-type: none"> Accountable for ensuring that: <ul style="list-style-type: none"> - all Residents receive individualized Plan of Care - safe and effective structures and processes for medication management are in place in the Home 	<ul style="list-style-type: none"> Demonstrate commitment and actions in support of Resident & Family Centred Care, including regular communications Ensuring that requirements are met with respect to the Plan of Care ultimately resides with the licensee 	<ul style="list-style-type: none"> Establish & foster a culture of safety for effective reporting, learning, and QI activities Allocate necessary resources to strengthen medication safety in the Home
Ministry	<ul style="list-style-type: none"> Fund the delivery of resident-centred care 	<ul style="list-style-type: none"> Establish legislation, and other regulatory requirements, regarding medication safety and monitor their implementation (e.g., establish requirements & monitor compliance through inspection) 	<ul style="list-style-type: none"> Support sharing of information across the sector regarding leading medication safety practices
External Collaborating Organizations	Accreditation <ul style="list-style-type: none"> Establish accreditation* standards that are resident & family centred (*Accreditation Canada, Commission on Accreditation of Rehabilitation Facilities (CARF)) 	<ul style="list-style-type: none"> Use standards to assess long term care homes and assign accreditation status 	
	ISMP Canada <ul style="list-style-type: none"> Receive and analyze reports of medication incidents to identify key contributing factors/system issues 	<ul style="list-style-type: none"> Integrate incident analysis learning with emerging research and QI findings to identify and disseminate leading practices and related resources 	<ul style="list-style-type: none"> Provide coaching and facilitation to support homes in achieving safe and sustainable medication management processes
	<ul style="list-style-type: none"> Other Organizations: Ontario Association of Residents' Councils; Family Councils Ontario; Ontario Long Term Care Clinicians; Ontario Long Term Care Association; AdvantAge Ontario; Ontario Centres for Learning, Research, & Innovation in Long-Term Care; Bruyère Research Institute; Ontario Health; and Healthcare Professional Regulatory Bodies 	<ul style="list-style-type: none"> Facilitate sharing and learning across the sector 	<ul style="list-style-type: none"> Advocate for safe medication management in long-term care